

6

5

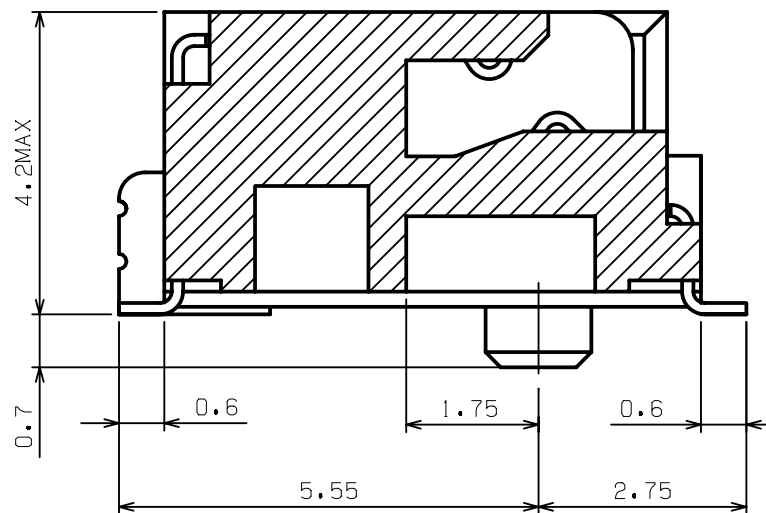
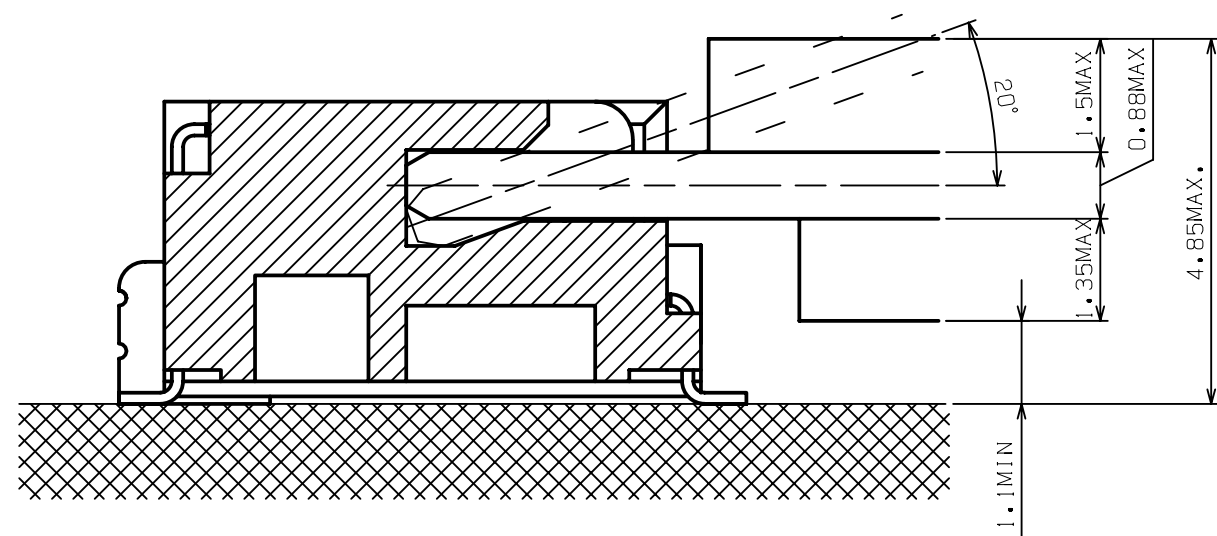
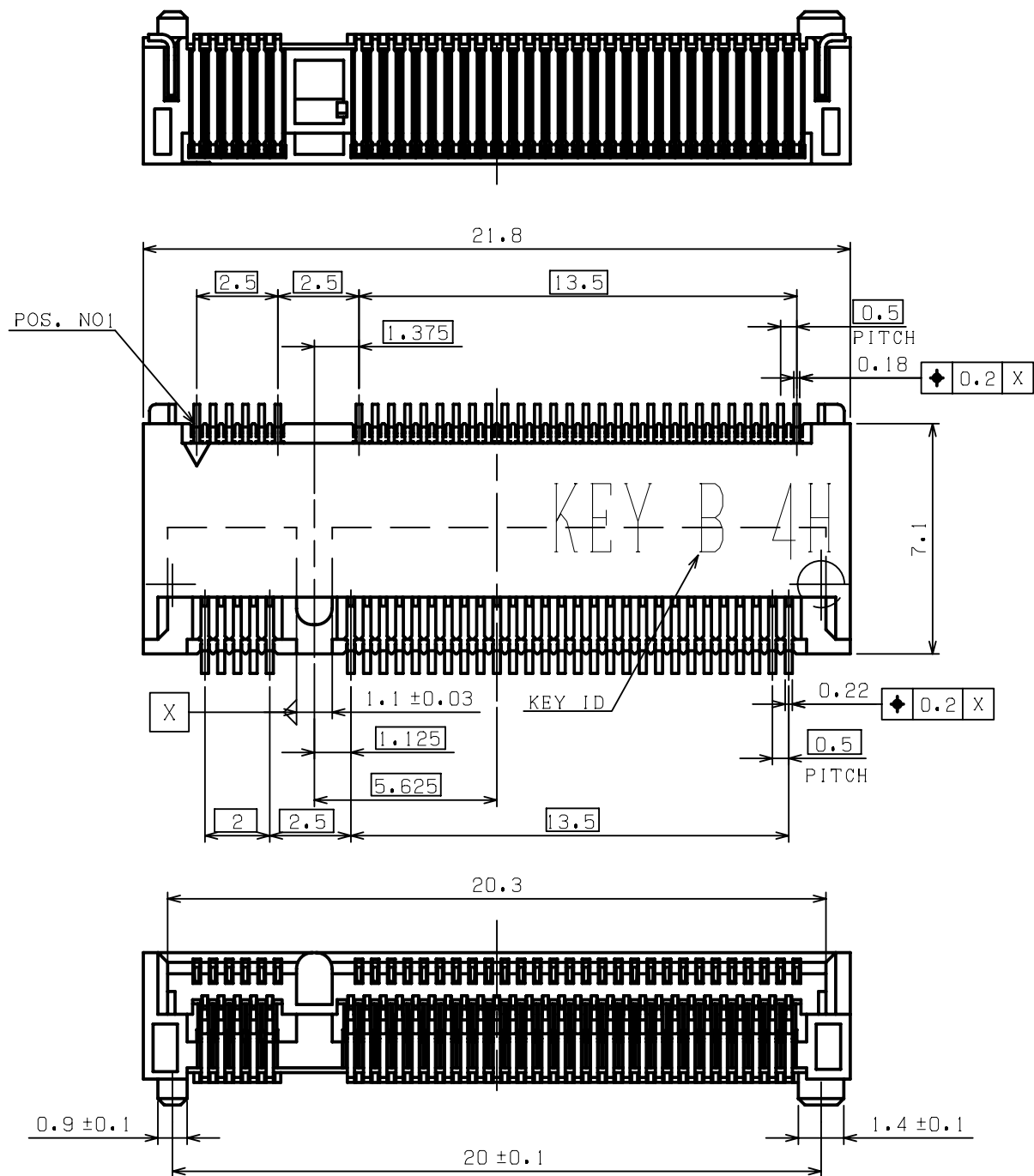
4

3

2

1

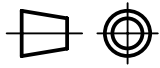

REV.	DESCRIPTION	DATE	DWG.	CHKD
0	PROPOSED	13/10/24	B.K	T.H



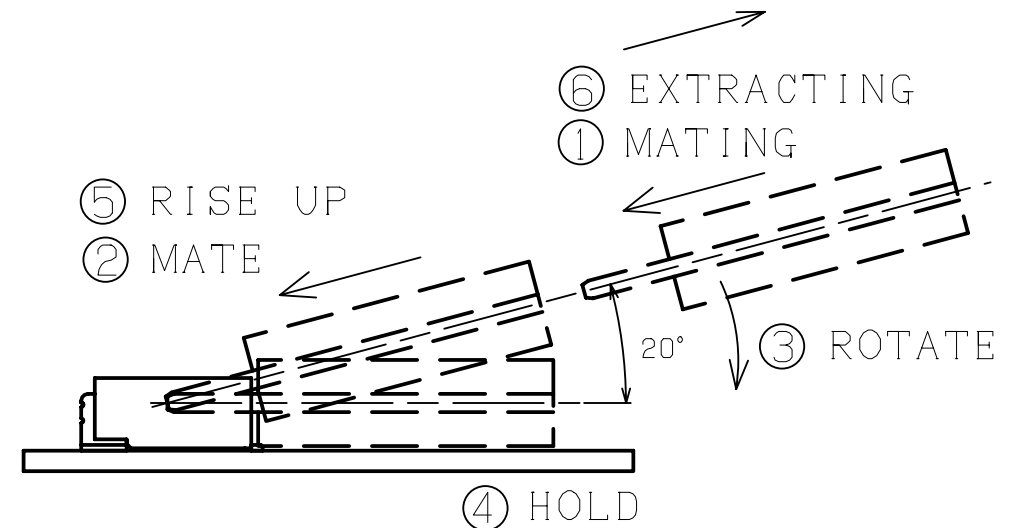
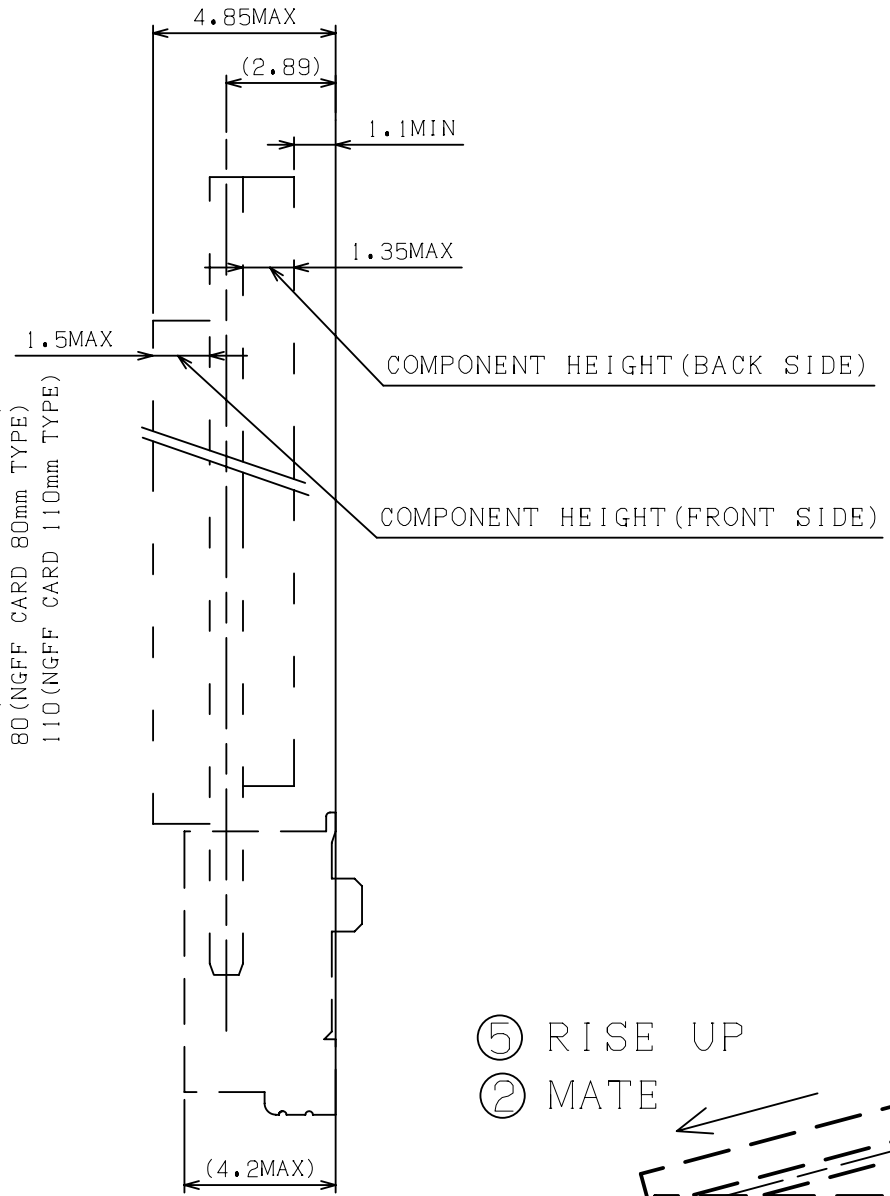
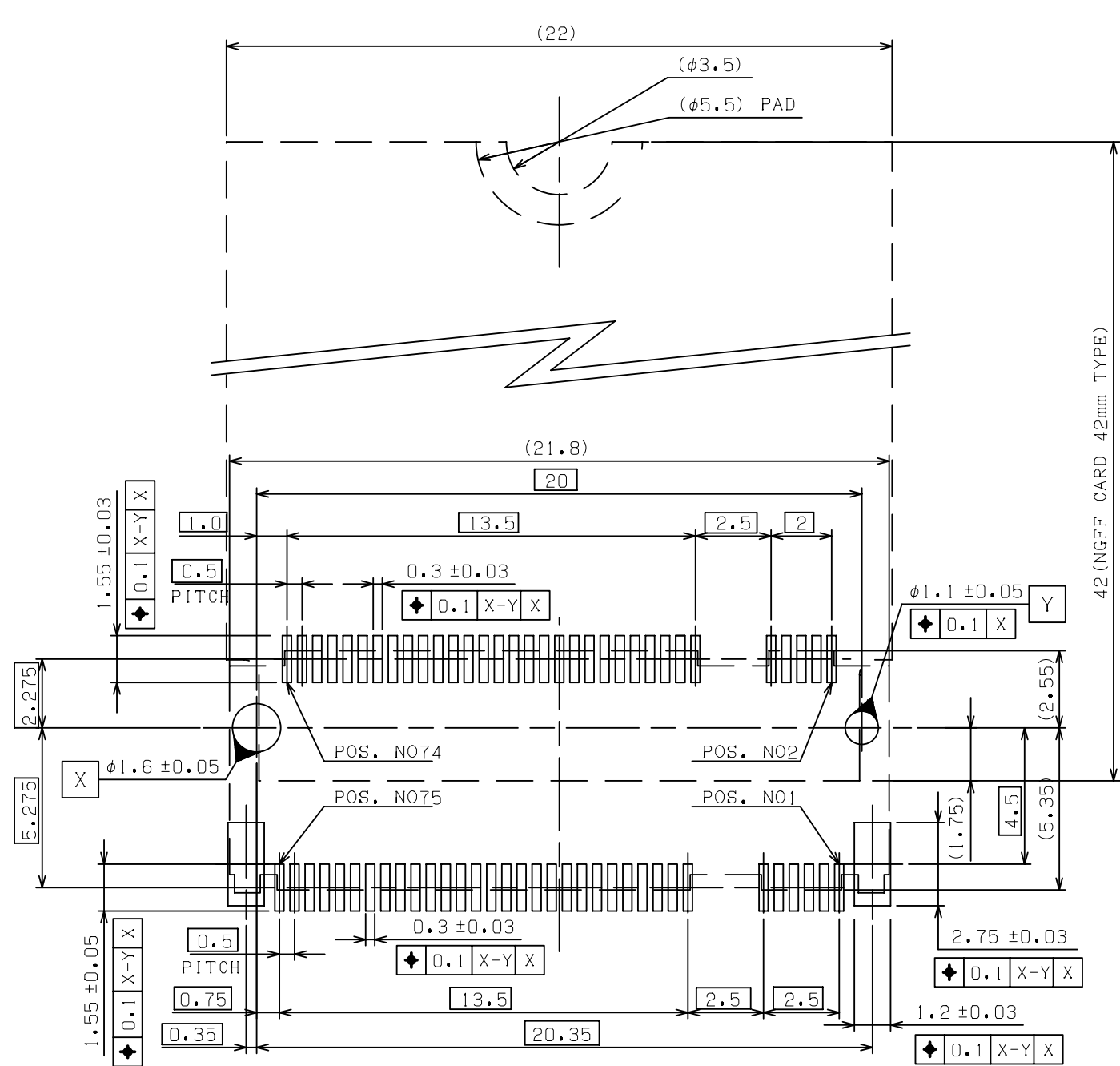
NOTES:

- MATERIAL:
HOUSING: HIGH TEMPERATURE THERMO PLASTIC UL94V-0
TERMINAL: COPPER ALLOY
SOLDER PEG: COPPER ALLOY
- FINISH:
TERMINAL:
CONTACT AREA: SEE CHARTS
SOLDERING AREA: SEE CHARTS
UNDER PL.: NICKEL PL. 50 μm THK MIN.
- THIS PRODUCT DOESN'T CONTAIN ENVIRONMENTAL HAZARDOUS PER DIRECTIVE 2002/95/EC FOR RoHS COMPLIANT.

KEY B	Au:30μm	CA1018-067B03
	Au:15μm	CA1018-067B02
KEY ID	GOLD FLASH	CA1018-067B01
	FINISH	PART NO.

FINISH		NAME		PART NO.	
MATERIAL	NET WEIGHT	COLOR	GENERAL TOLERANCE	UNIT:mm	
*****	***g	BLACK	±0.2 ±3°	UNIT:mm	
FIN.&TREAT	GROSS WEIGHT	SCALE	SIZE		
*****	***g	5:1	A3		
CUSTOMER	PART NO.	CA1018-067B**		REV.	0
CUSTOMER PART NO.	PROPOSAL NO.	****-***-**-**		REV.	*
*****		*****-***-**-**		(SHEET 1 OF 4)	
美星鴻科技股份有限公司 MSH TECHNOLOGY INC.		M.2 CONNECTOR KEY ID "B"			
APP. 13/10/24	CHKD 13/10/24	DWG. 13/10/24	0.5mm PITCH 4H ASSY		
T.HASHIMOTO	T.HASHIMOTO	B.KA			

REV.	DESCRIPTION	DATE	DWG.	CHKD
	SEE SHEET 1 OF 4			



KEY ID "B"
RECOMMENDED P.C. BOARD LAYOUT

FINISH		NAME		PART NO.	
MATERIAL	*****	NET WEIGHT	***g	COLOR	BLACK
FIN. & TREAT	*****	GROSS WEIGHT	***g	SCALE	5:1
CUSTOMER	*****	GENERAL TOLERANCE	±0.2 ±3°	UNIT:mm	
CUSTOMER PART NO.	*****	SIZE	A3		
		CUSTOMER	*****	PART NO.	CA1018-067B**
		CUSTOMER PART NO.	*****	PROPOSAL NO.	****-***-**-**
				NAME	M.2 CONNECTOR KEY ID "B"
					0.5mm PITCH 4H ASSY
APP.	13/10/24	CHKD	13/10/24	DWG.	13/10/24
					T.HASHIMOTO B.KA

6

5

4

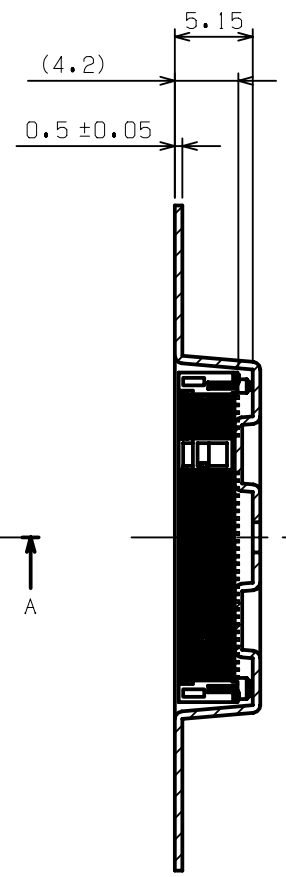
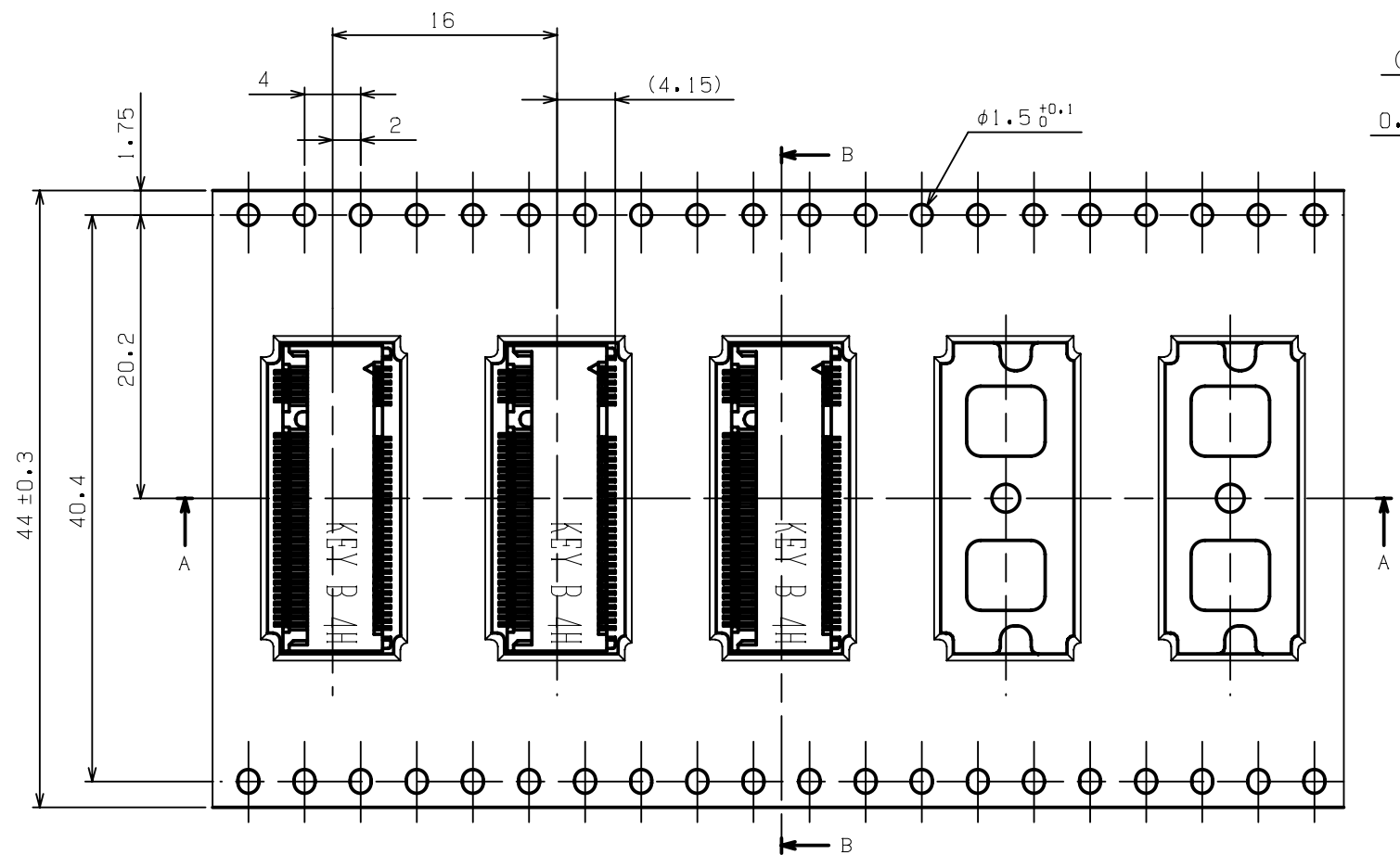
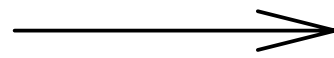
3

2

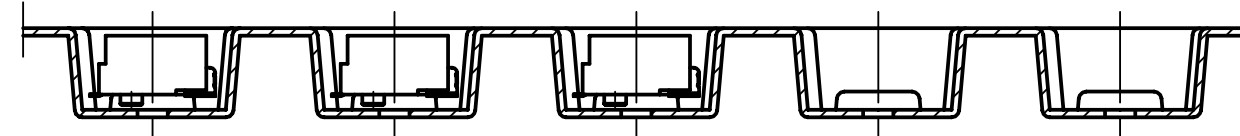
1

REV.	DESCRIPTION	DATE	DWG.	CHKD
	SEE SHEET 1 OF 4			

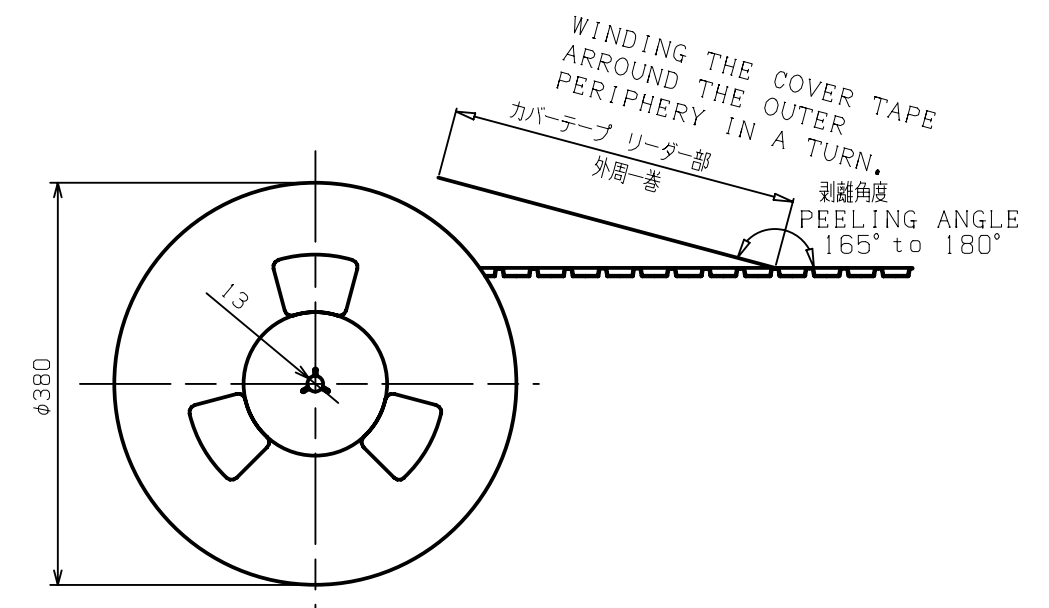
DIRECTION OFF TOP OF REEL



SECT B-B



SECT A-A



NOTES:

1. THE DIRECTION OF EACH CONNECTOR ON A EMBOSS IS REFERED TO THIS DRAWING.
2. GENERAL TOLERANCE : ± 0.5 , $\pm 3^\circ$
3. PACKAGED IN EMBOSS TAPE AND PLASTIC REEL 1000 PCS PRE REEL.

FINISH		NAME		PART NO.	
MATERIAL	NET WEIGHT	COLOR	GENERAL TOLERANCE	UNIT:mm	
*****	***g	BLACK	$\pm 0.2 \pm 3^\circ$	REV. 0	
FIN.&TREAT	GROSS WEIGHT	SCALE	SIZE	REV. *	
*****	***g	5:1	A3	CA1018-067B**	
CUSTOMER	PART NO.		PROPOSAL NO.		
*****	*****		*****-***-**-**		
CUSTOMER PART NO.	NAME		(SHEET 4 OF 4)		
*****	M.2 CONNECTOR KEY ID "B"		REV. *		
APP. 13/10/24		CHKD 13/10/24		DWG. 13/10/24	
T.HASHIMOTO		T.HASHIMOTO		B.KA	
				0.5mm PITCH 4H ASSY	